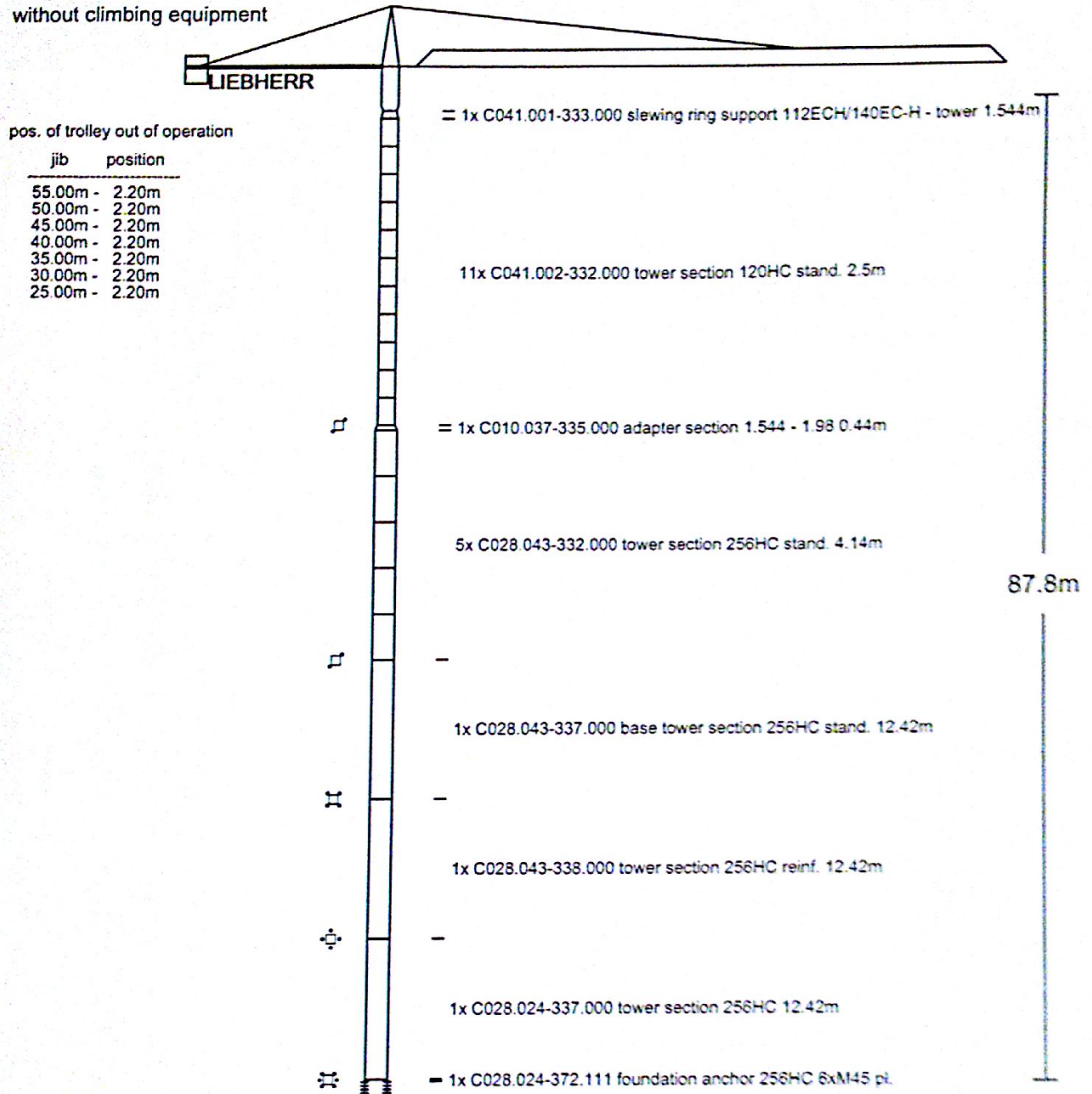


112 EC-H on tower 120HC/256HC

without climbing equipment



FOUNDATION LOADING

Wind : DIN/FEM

st23dV1.39-V1.53

Jib Tr.out o.	MD [kNm]	Crane in operation			Cr. o. of op. st. beh.			Cr. o. of op. st. fro.			Crane in erection		
		M [kNm]	H [kN]	V [kN]	M [kNm]	H [kN]	V [kN]	M [kNm]	H [kN]	V [kN]	M [kNm]	H [kN]	V [kN]
55.0/ 2.2	220	3663	59	877	7316	152	859	6859	122	861	2870	40	729
50.0/ 2.2	200	3652	58	870	7212	152	846	6992	122	848	2586	39	662
45.0/ 2.2	180	3580	57	855	7167	152	827	7008	122	828	2586	39	662
40.0/ 2.2	160	3533	57	848	7132	152	814	7059	122	816	2586	39	662
35.0/ 2.2	160	3515	47	836	7193	152	796	6982	122	798	2586	39	662
30.0/ 2.2	160	3422	47	796	7278	152	754	6902	122	754	2586	39	662
25.0/ 2.2	160	3477	47	809	7172	152	750	7008	122	751	2586	39	662